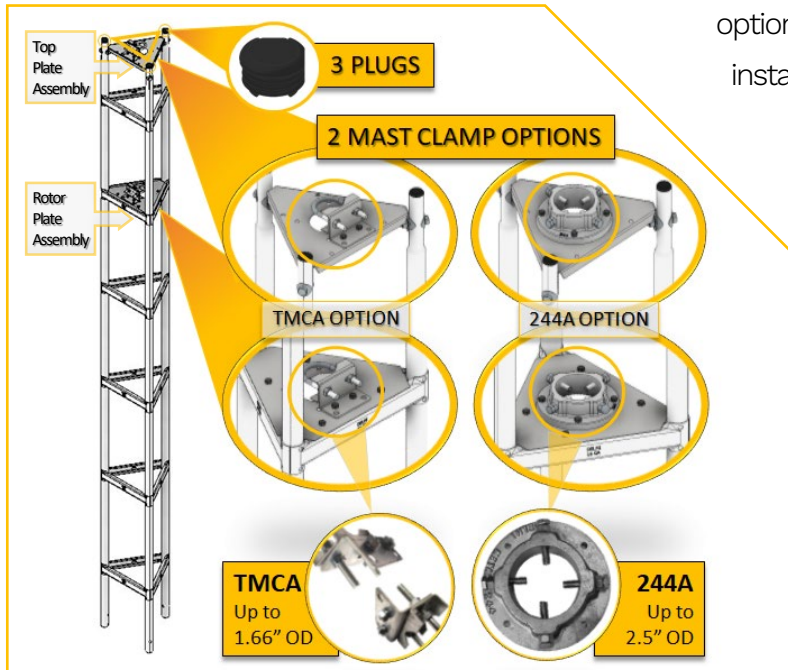


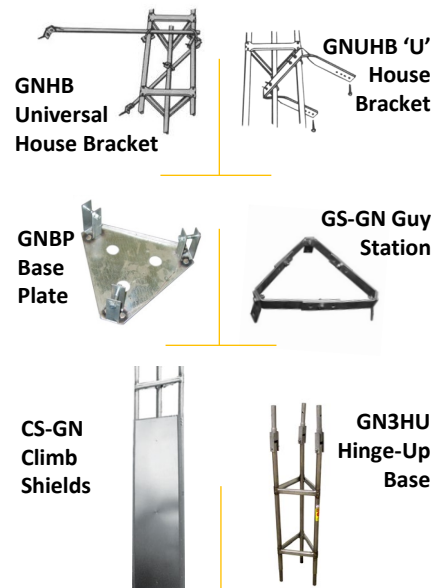
Introducing our new GN *Wade's most popular tower is now even better!*

GN Top Kit

By replacing the 4 current sections with a single straight design and optional Top Kit, we've made these versatile, reliable, easily installed solutions an even simpler sale. We want to help you even further with this comprehensive overview.



Accessories



Applications

- ISPs P2P / P2MP, Backhaul
- Consumer off-air TV antenna, satellite, wireless internet
- WiMax
- Indoor/outdoor 802.11 WiFi (CPE/AP)
- LTE
- Cellular network coverage extension
- Video security
- Mesonets
- SCADA (oil & gas monitoring)

★ New Top Kit Benefits

- Eliminates need to stock both straight and top sections
- Only 3 bolt sizes for simple installation
- Convert any current or past 16 and 18 gauge section into a top with very few tools
- Easily add sections to existing installs
- Compact enough to easily stock in work vehicle
- 244A mast clamp option increases maximum mast OD range from 1.66" to 2.5"
- Greater mast range accommodates most mounted equipment
- Courier shippable - reduces transport costs and warehouse space
- Makes GN sales pitch more straight forward

💰 GN Tower Features and Benefits

- New pressure tested, robot welded construction for strong, consistent, aesthetically clean welds
- 16 or 18 gauge galvanized steel
- Stronger than aluminum
- Sections weigh 30 lbs or less
- Easy installation with no concrete required
- Small footprint
- Safe and reliable
- Unguyed, unobtrusive tower solution up to 60'
- Less expensive than competition
- Climbing safety standards available
- In the field for 60 years, over 15,000 sold
- Installations all across Canada and US in harsh environments
- Wind area is comparable to DMX Self-Supporting models
- Building side mounting up to 2 ½ sections above top bracket without guying
- Simply anchor with drive stakes and our universal house bracket that adapts to any roof
- Upsell Opportunities:
 - Climb Shields, Masting, Guying, Hinge-Up Base, Antenna
- Manufactured in Canada using North American steel

DMXB-06 Install



Wade DMXB bracketed towers are a versatile and dependable solution for customers within a vast market. These products are safe, reliable, and easy to install. This is a summary of its positive selling point to consider when engaged with your customer.

★ Features & Benefits

- “X” brace with beaded channel leg design
- Enhancements made to both leg profile and taper allow for easier installation and improved tower structure
- High strength galvanized steel construction
- Heat treated aluminum rivets
- Top sections tapered
- Universal house bracket
- No concrete required

Package Includes:

Tower sections, DM mast, top plate, rotor plate, BP2S base plate, TMCA mast clamp assembly, DMBS drive stakes and DMXHB universal house bracket. Height includes mast.

🔧 Applications

- ISPs P2P/P2MP, Backhaul
- Consumer off-air TV antenna, satellite, wireless internet
- WiMax
- Indoor/outdoor 802.11 WiFi (CPE/AP)
- Cellular network coverage extension
- LTE
- Video security
- Mesonets
- SCADA (oil & gas monitoring)

🏋️ Load Limits

Designed to support equipment up to 3 square ft. (0.28 m²) projected wind area, mounted not more than 2.5 sections above house bracket.

Caution: GS-123 guy stations recommended for larger loads or greater heights above house bracket.

🛠️ Accessories

